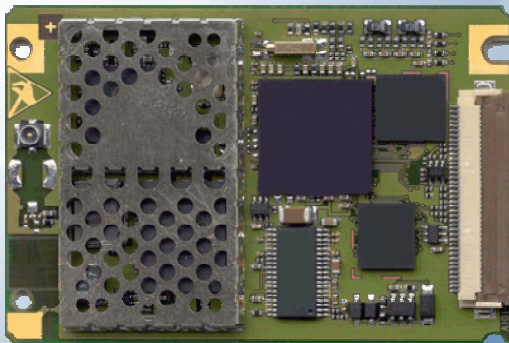


SIEMENS

MC35i



RELEASE NOTES

Version: 01.02
DocID: MC35i_RN_v01.02

Wireless Modules

Contents

1	Preamble	3
1.1	Related documents	3
2	Important notes	4

General Notes

Product is deemed accepted by recipient and is provided without interface to recipient's products. The documentation and/or product are provided for testing, evaluation, integration and information purposes. The documentation and/or product are provided on an "as is" basis only and may contain deficiencies or inadequacies. The documentation and/or product are provided without warranty of any kind, express or implied. To the maximum extent permitted by applicable law, Siemens further disclaims all warranties, including without limitation any implied warranties of merchantability, completeness, fitness for a particular purpose and non-infringement of third-party rights. The entire risk arising out of the use or performance of the product and documentation remains with recipient. This product is not intended for use in life support appliances, devices or systems where a malfunction of the product can reasonably be expected to result in personal injury. Applications incorporating the described product must be designed to be in accordance with the technical specifications provided in these guidelines. Failure to comply with any of the required procedures can result in malfunctions or serious discrepancies in results. Furthermore, all safety instructions regarding the use of mobile technical systems, including GSM products, which also apply to cellular phones must be followed. Siemens or its suppliers shall, regardless of any legal theory upon which the claim is based, not be liable for any consequential, incidental, direct, indirect, punitive or other damages whatsoever (including, without limitation, damages for loss of business profits, business interruption, loss of business information or data, or other pecuniary loss) arising out the use of or inability to use the documentation and/or product, even if Siemens has been advised of the possibility of such damages. The foregoing limitations of liability shall not apply in case of mandatory liability, e.g. under the German Product Liability Act, in case of intent, gross negligence, injury of life, body or health, or breach of a condition which goes to the root of the contract. However, claims for damages arising from a breach of a condition, which goes to the root of the contract, shall be limited to the foreseeable damage, which is intrinsic to the contract, unless caused by intent or gross negligence or based on liability for injury of life, body or health. The above provision does not imply a change on the burden of proof to the detriment of the recipient. Subject to change without notice at any time. The interpretation of this general note shall be governed and construed according to German law without reference to any other substantive law.

Copyright

Transmittal, reproduction, dissemination and/or editing of this document as well as utilization of its contents and communication thereof to others without express authorization are prohibited. Offenders will be held liable for payment of damages. All rights created by patent grant or registration of a utility model or design patent are reserved.

Copyright © Siemens AG 2003

MC35i

1 Preamble

This Release Note introduces **MC35i 01.02** and provides a list of problems and deficiencies known of the present version.

The MC35i module has been approved to comply with all standards listed in [1] and is now labeled with the CE conformity mark.

1.1 Related documents

The technical documentation supplied with the engineering samples is currently under revision and marked as "Preliminary".

- [1] MC35i Hardware Interface Description, Version 01.02
- [2] MC35i AT Command Set, Version 01.02
- [3] GPRS Startup User's Guide
- [4] Remote-SAT User's Guide
- [5] Multiplexer User's Guide
- [6] Multiplex Driver Developer's Guide for Windows 2000 and Windows XP
- [7] Multiplex Driver Installation Guide for Windows 2000 and Windows XP
- [8] DSB35 Support Box – Evaluation Kit for Siemens Cellular Engines
- [9] Application Note 16: Upgrading MC35i Firmware
- [10] Application Note 14: Audio and Battery Parameter Download (in preparation)

2 Important notes

The following table contains a list of known problems and provides workarounds where appropriate.

Item / Category	Problem / Workaround
Hardware control signals of the serial interface	The settings made for the hardware control signals of the serial interface (e.g. AT\Q3, AT%D, AT&D etc.) must be compatible with the behaviour of the external application. If the external application is designed to toggle the control signals of the serial interface, it must be ready to receive data from the module as soon as it activates the lines of the serial interface. This avoids loss of data sent from the module, especially at the time when the serial interface is being opened. To prevent problems it is recommended not to disconnect the external application from the serial interface.
AT^SRTC	If you execute the AT^SRTC write command several times in a quick succession take into account that the selected configuration needs to be saved. Therefore, it is necessary to leave a pause of approximately 3.2 seconds before entering the next AT^SRTC write command or querying the current status with the AT^SRTC read command.
AT^SNFD / AT^SNFS	AT^SNFD resets the parameters configured with AT^SAIC, AT^SNFI, AT^SNFO and AT^SNFS to their factory defaults. However, please note that the restored setting AT^SNFS=1 does not take effect until after the next restart of MC35i. Workaround: To avoid restarting MC35i, simply enter AT^SNFS=1 if you wish to return to the default audio mode 1.
Remote-SAT	The Unsolicited Result Code ^SSTN: 254 signals the termination of the current SAT menu session and triggers the display of the SAT main menu (formerly transferred on URC ^SSTN: 37). However, in the present release of MC35i, this URC does not appear if SAT AT command sequences are fired without delay. Workaround: Enter a general 100 ms delay before the beginning of a new SAT AT command.
Using ATH if a GPRS connection is established	In case you wish to terminate a GPRS and a CS call at the same time entering the ATH command, a 40 second delay occurs before the call will be terminated. Workaround: Enter ATH on an interface which is not used for the GPRS connection or enter the CHLD command to terminate the CS call first. The GPRS connection can be deactivated using ATH or AT+CGACT. Please note that AT+CHLD is available whether or not the Multiparty service has been subscribed to, e.g. the command can be used even though the SIM card does not support Multiparty calls.
AT+CFUN	An incoming or active call will be immediately terminated when the functionality level is set using AT+CFUN=1.