



February 6, 2008

G24-L / G24-LC Variant Release Notes

Scope

This document describes the hardware variations between G24-L Standard model and the G24-LC Charger model.

There are no SW variations between G24-LC and G24-L, which share the same SW version, as described in the product SW release notes.

Abstract

G24-L is a variant of the G24-LC, and therefore is compliant to all the standards and regulatory certification approvals as G24-LC.

The G24-LC incorporates an additional battery charging circuit, which is not included in the G24-L.

The table and figures below, describe in detail the component placement allocation in each module, due to the charger circuit.

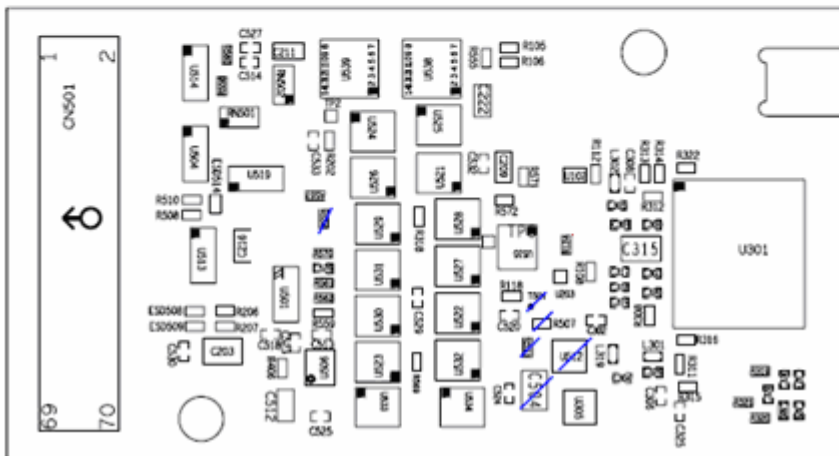
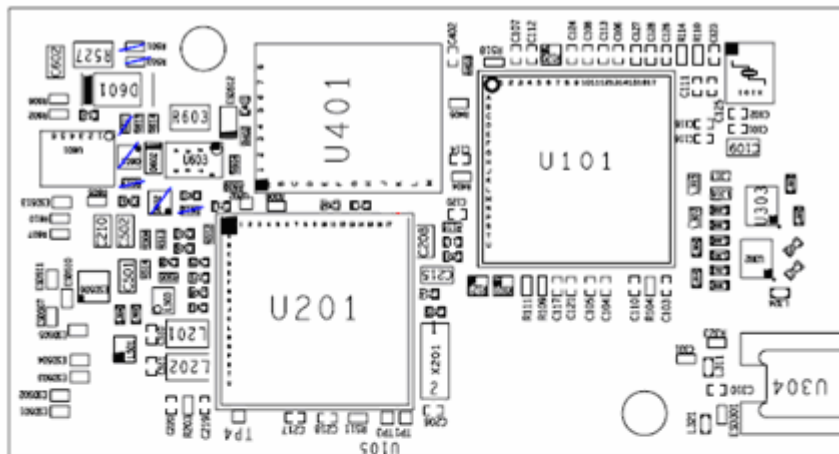
Components List

| Part number | Reference Designator | G24-L | G24-LC |
|-------------|----------------------|-------|--------|
| SC210H045A0 | C603 | N | Y |
| SC322I046A0 | C601 | N | Y |
| SD2520S3270 | D602 | N | Y |
| SR010030451 | R607 | N | Y |
| SR000000452 | R557 (0 ohm) | N | Y |
| SR0200C0831 | R527 | N | Y |
| SR000160451 | R604 | N | Y |
| SR003030431 | R605 | N | Y |
| SR059030432 | R610 | N | Y |
| SR004700431 | R614/R615 | N | Y |
| SA09209B080 | U601 | N | Y |
| SA04102P141 | U603 | N | Y |
| SR005100451 | R609 | N | Y |
| SC222F085B1 | C504 | Y | N |
| SS03139P0A0 | Q601 | Y | N |

| Part number | Reference Designator | G24-L | G24-LC |
|-------------|----------------------|-------|--------|
| SS03134N0A0 | Q602 | Y | N |
| SR007520431 | R501/R503 | Y | N |
| SR015030431 | R507 | Y | N |
| SR000230430 | R573 | Y | N |
| SR001150451 | R612 | Y | N |
| SS0847350A0 | T501 | Y | N |
| SR010030451 | R611/R613 | Y | N |
| SR010030431 | R557 (100K ohm) | Y | N |
| SR017430431 | R556 | Y | N |
| SA0400TG250 | U512 | Y | N |

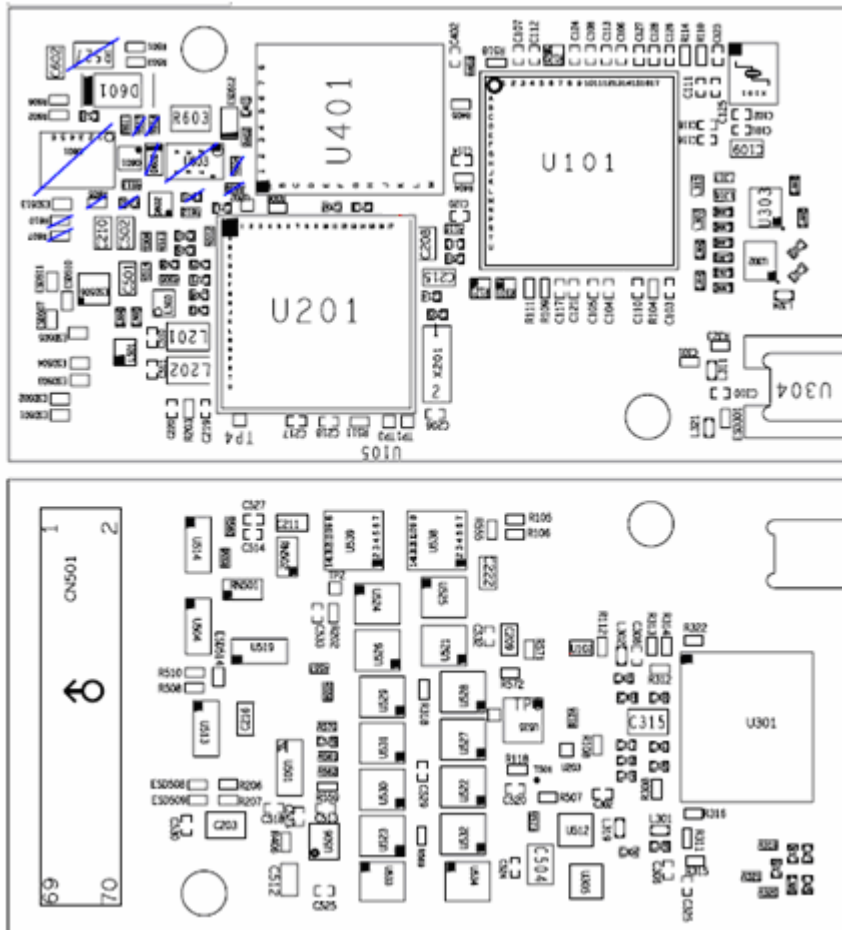
G24-LC Components Placement

Component differences are marked by a blue strike.



G24-L Components Placement

Component differences are marked by a blue strike.



Issued By:

Nimrod Zarmi
 Engineering Product Manager
 Motorola Wireless Modules